



# Workshop: Building research management capacity: Case of University of Jyväskylä

## 3.2.2021

**Elina Humala, Senior Grant Advisor**

**Research and Innovation Services, University of Jyväskylä**



# JYU

## University of Jyväskylä

- One of the top universities in Finland
- Rector Keijo Hämäläinen
- 156-year history  
(Teacher Seminary in 1863)
- Architecturally and environmentally  
unique campus near the city centre





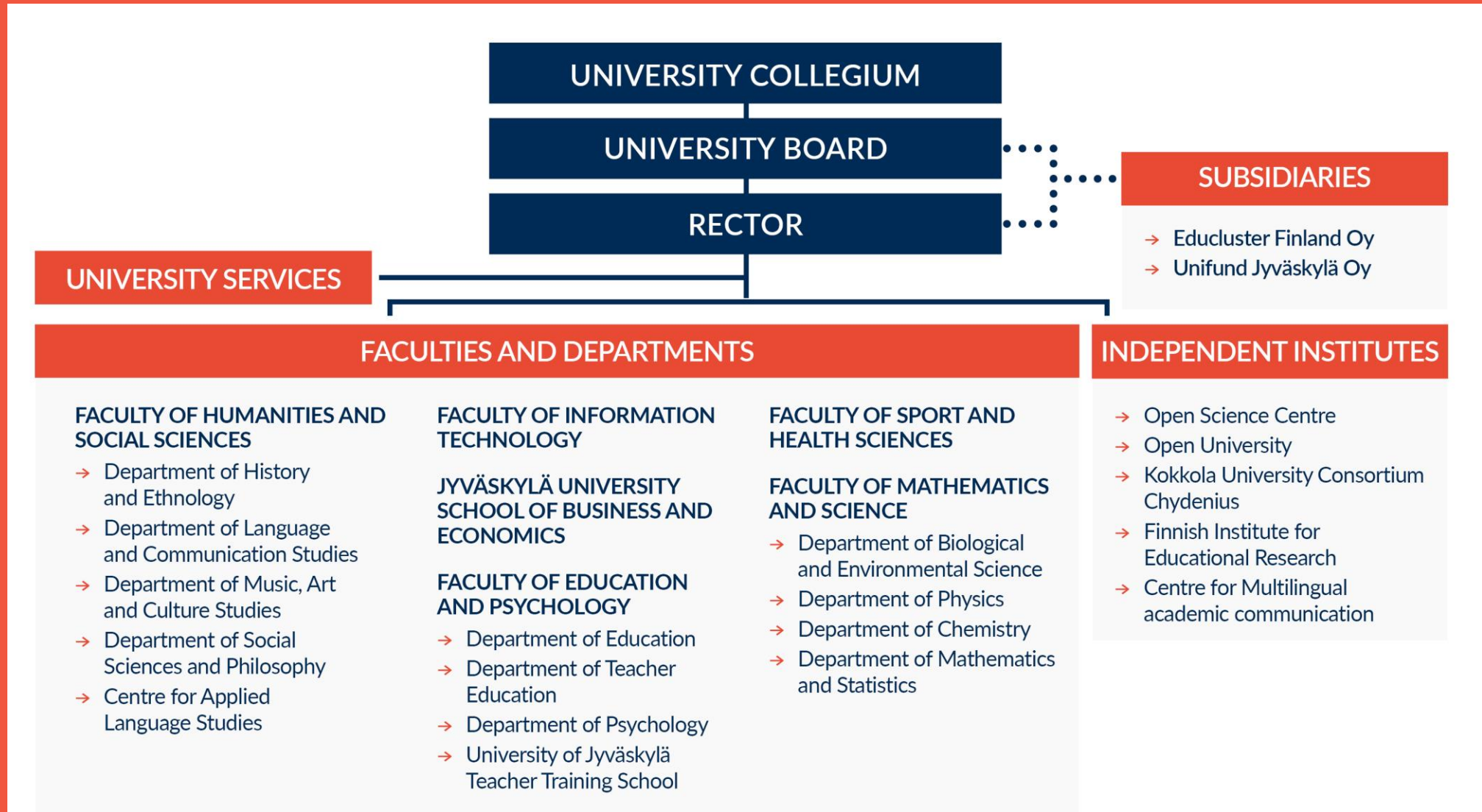
AROUND **204** million euros  
TOTAL INCOME

**6**  
FACULTIES

**14,500 + 15,000**  
DEGREE STUDENTS STUDENTS IN THE OPEN UNIVERSITY

**2,500** **900**  
EMPLOYEES RESEARCHERS

# Organisation





# Core fields

- Learning, teaching and interaction
- Basic natural phenomena and mathematical thinking
- Language, culture and society
- Physical activity, health and wellbeing
- Information technology and the human in the knowledge society
- Sustainable Business and Economics



# JYUNITED SCIENCE.

Since 1863.

## Academy Professors



**Pasi Ihalainen** 2021-2026  
Comparative European history



**Otso Ovaskainen** 2021-2026  
Mathematical and statistical ecology



**Sara Heinämaa** 2017-2021  
Philosophy



**Hannu Häkkinen** 2016-2020  
Physics

## Centres of Excellence in Research nominated by the Academy of Finland

### 2018-2025



**AGEING AND CARE**  
Professor **Teppo Kröger**  
Coordinated by the University of  
Jyväskylä



**INVERSE MODELLING AND IMAGING**  
Professor **Mikko Salo**  
Coordinated by the University of Helsinki



**GAME CULTURE STUDIES**  
Professor **Raine Koskimaa**  
Coordinated by the University of Tampere

### 2014-2019



**ANALYSIS AND DYNAMICS RESEARCH**  
Professor **Pekka Koskela**  
Coordinated by the University of Helsinki

# JYU's ERC grantees

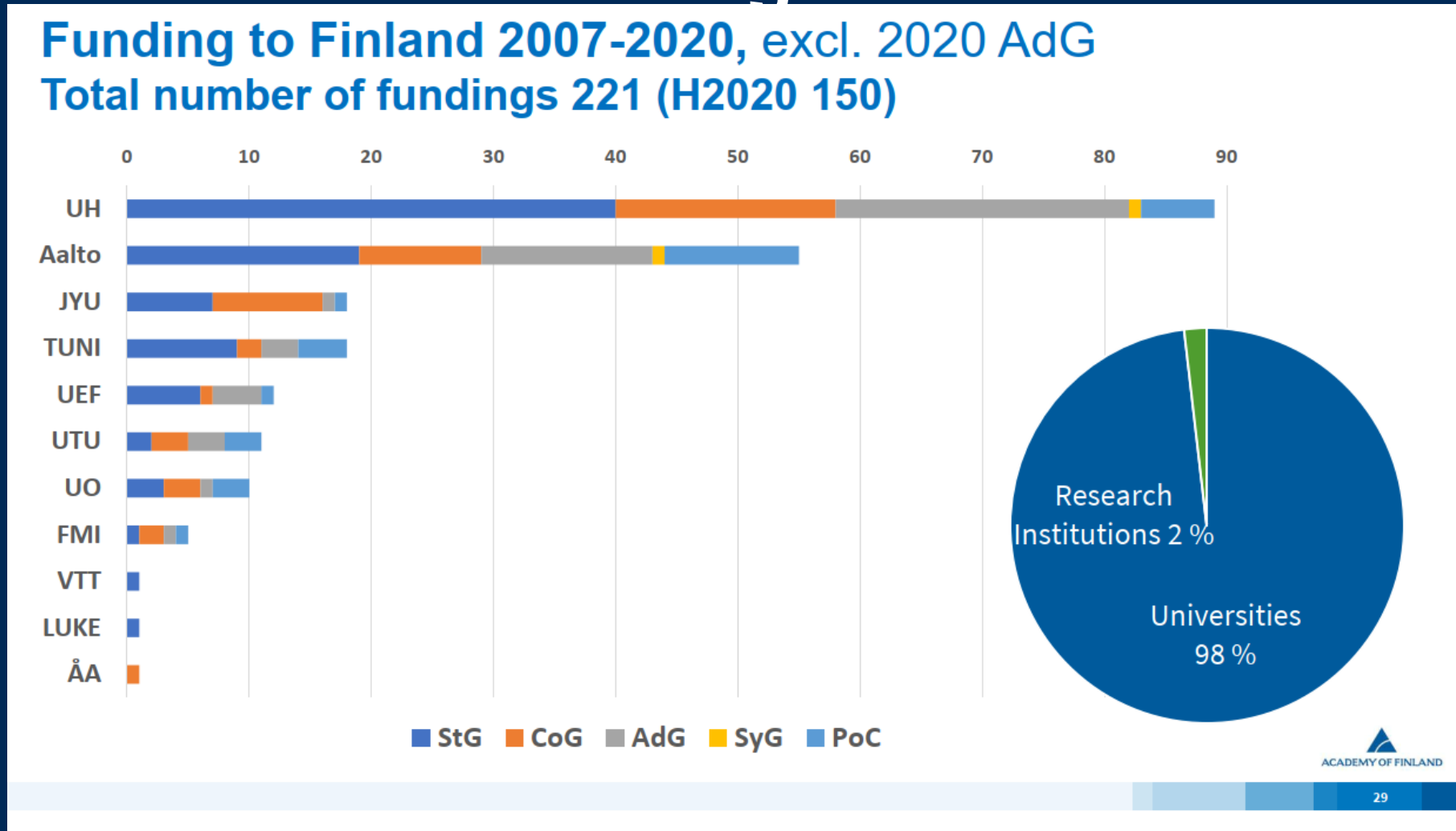
- **Minna Torppa**, CoG, *Earlymath*, 2021 – 2026 (*in grant preparation*)
- **Juha Muhonen**, StG, *Optomechanical quantum bus for spins in silicon* 2019-2024
- **Anu Kankainen**, CoG, *Masses, isomers and decay studies for elemental nucleosynthesis*, 2018-2023
- **Anna Kuparinen**, CoG, *Complex eco-evolutionary dynamics of aquatic ecosystems faced with human-induced and environmental stress*, 2018 - 2023
- **Mikko Salo**, CoG, *Inverse boundary problems: toward a unified theory*, 2018-2023
- **Heikki Tuononen**, CoG, *Small molecule activation by main-group compounds*, 2018-2023
- **Enrico Le Donne**, StG, *Geometry of metric groups*, 2017–2022 (UNIFR, Pisa and JYU)
- **Taina Rantanen**, AdG, *Active ageing*, 2016–2021
- **Jari Kaukua**, CoG, *Epistemic transitions in Islamic philosophy, theology and science: from the 12th to the 19th century*, 2016–2021
- **Tuomas Lappi**, CoG, *The nonlinear high energy regime of Quantum Chromodynamics*, 2016-2021
- **Tuuli Lähdesmäki**, StG, *Legitimation of European cultural heritage and the dynamics of identity politics in the EU €*, 2015–2020

## Under FP7

- **Marja Tiirola**, CoG, 2014–2019
- **Mikko Salo**, StG,, 2012–2017
- **Tero Heikkilä**, StG, 2010–2017, (Aalto ja JYU)
- **Nathan Lillie**, StG, 2011–2014
- **Paul Greenlees**, StG, 2008–2014
- **Taneli Kukkonen**, StG,, 2009–2013



# University of Jyväskylä ranks third in receiving ERC funding in Finland





# Development of JUY's support process for ERC applicants

2015 questionnaire for ERC applicants and potential applicants

- 62 researchers answered

**Why to apply ERC funding:** to establish own research group, freedom to design own research project, enough resources to implement ambitious project, career development, own salary funding, etc.

**What limits applying ERC funding:** time, simultaneous calls (deadline very close to Academy of Finland deadline), competition, missing instrument between Consolidator and Advanced schemes, etc.

**What would help in applying:** peer support (mentoring, examples), time (freedom from teaching obligations, internal deadlines, technical help to fill the application), application pre-reviewing, trainings, step by step guides, help for ethics self-assessment, encouragement, incentives, etc.



# JYU's ERC support process

## ***Before applying:***

National funding, mobility, preliminary evidence

## ***1. Pre-proposal phase: 3-12 months before the call deadline***

Enrolment of potential applicants

One day training event for potential applicants

Possibility to apply for a one-month application preparation leave from research council and department/faculty

## ***2. Proposal phase: 3 -4 months before deadline until deadline***

Three peer-to-peer meetings for potential applicants with the following themes:

A) Key idea and concept and experiences from applicants

B) High risk high gain and example of an application

C) Feasibility of the project and example of evaluation summary

Help for the administrative forms, budgeting, ethics self-assessment and data management

Pre-reviews of the draft: colleagues, mentor, external consultant and/or RIS advisors, translators

Host institution commitment letter

## ***3. Second step***

National interview training, mock panels

## ***4. Debriefing of evaluation summary report***





# Thank you!

[ris@jyu.fi](mailto:ris@jyu.fi)

[Research — University of Jyväskylä \(jyu.fi\)](https://www.jyu.fi)